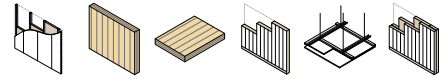


FIRE STRIPE GRAPHITE PRO

FIREPROOF TAPE FOR INSULATED METAL PIPES AND ELECTRICAL CABLES



CLT




- Thin profile (4 mm)
- Ideal for applications inside the rigid support
- It is not necessary to remove the pipe insulation cup on which FIRE STRIPE GRAPHITE PRO is applied

COMPOSITION

- ① highly expansive "Firefill" intumescent material



CODES AND DIMENSIONS

CODE	B [mm]	s [mm]	L [m]	B [in]	s [in]	L [ft]	
FIRESTRYPE50	50	4	10	2	157,5	32 9 3/4	1

TECHNICAL DATA

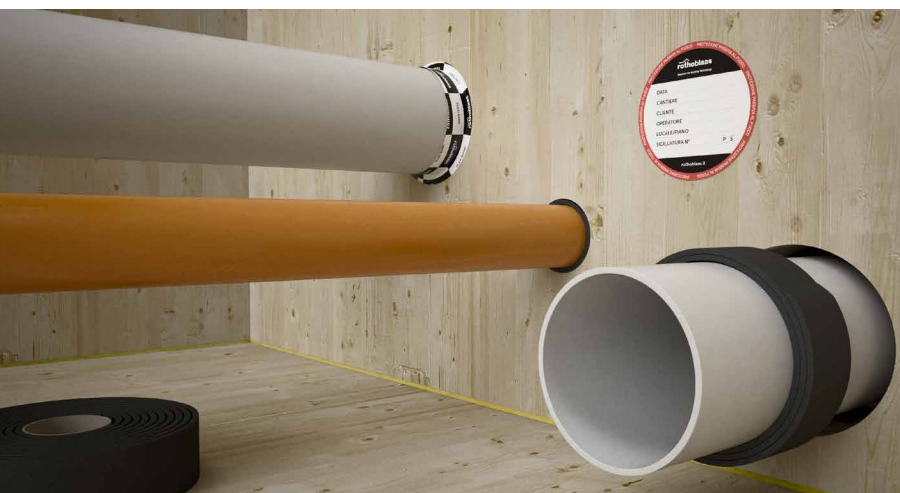
Properties	value	USC units
Free expansion	> 20:1	-
Activation temperature	180 °C	356 °F
Generated pressure	10 bar	145 psi
Fire resistance rating on CLT wall/floor ⁽¹⁾	EI120	-

⁽¹⁾EN 1366-3 standard. For full details and tested configurations, please refer to the manual or contact our technical department for updates on new tests.

 Waste classification (2014/955/EU): 07 02 13.

RECOMMENDATIONS FOR INSTALLATION

- 1 Wrap the sheath around the penetration to be protected, checking the application data sheets to determine the exact number of required turns.
- 2 Fix the sheath with the adhesive tape (FLEXI BAND) at the penetration
- 3 Seal the perimeter with the sheath, making sure it is inserted completely flush with the wall, using a double panel glued and sealed with acrylic sealant



FIELDS OF APPLICATION

- bundles of electrical cables in corrugated tubes
- bundled multilayer pipes
- insulated metal pipes