

FAS A4 | AISI316

SCREWS FOR FAÇADES

OPTIMISED GEOMETRY

Thanks to its flange head, partially threaded body and self-drilling tip, it is the appropriate screw for fastening façade panels (HPL, fibre cement sheets, etc.) on timber battens.

A4 | AISI316

A4 | AISI316 austenitic stainless steel for high corrosion resistance. Ideal for environments adjacent to the sea in corrosivity class C5 and for insertion on the most aggressive timbers in class T5.

COLOURED HEAD

Available in white, grey or black for perfect colour uniformity with the panel. The colour of the head can be customised on request.



DIAMETER [mm]

3,5 8

LENGTH [mm]

20 320

SERVICE CLASS

☒ SC1 ☒ SC2 ☒ SC3

ATMOSPHERIC CORROSIVITY

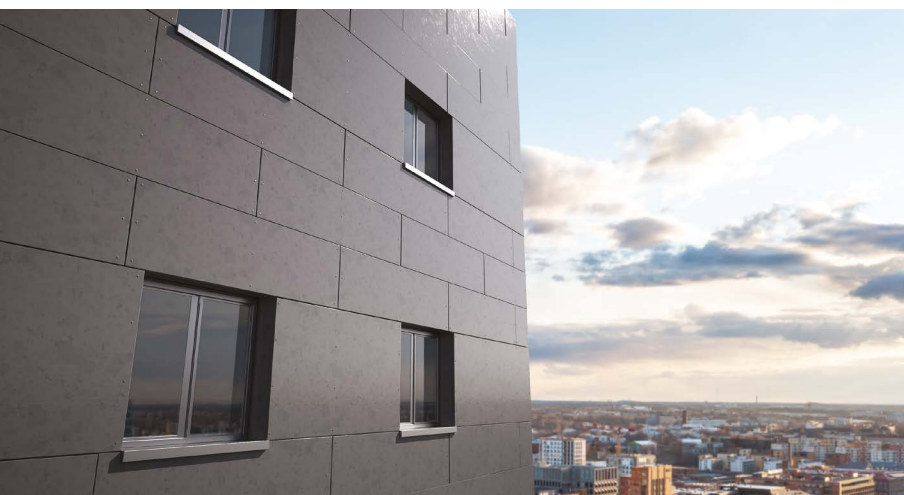
☒ C1 ☒ C2 ☒ C3 ☒ C4 ☒ C5

WOOD CORROSIVITY

☒ T1 ☒ T2 ☒ T3 ☒ T4 ☒ T5

MATERIAL

A4
AISI 316 A4 | AISI316 austenitic stainless steel (CRC III)



FIELDS OF USE

It can be used outdoors in aggressive environments. Fixing of façade elements (HPL panels, fibre cement slabs, etc.) to timber substructures.

FASTENING METAL SHEET

Can be installed on sheets (steel or aluminium) up to 0,5 mm thick without pre-drilling.

CODES AND DIMENSIONS

FAS: stainless steel



d_1 [mm]	CODE	L [mm]	b [mm]	pcs
4,8	FAS4825	25	17	200
TX 20	FAS4838	38	23	200

FAS W: RAL 9010 - white



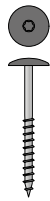
d_1 [mm]	CODE	L [mm]	b [mm]	pcs
4,8	FASW4825	25	17	200
TX 20	FASW4838	38	23	200

FAS N: RAL 9005 - black



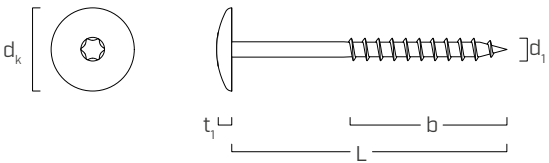
d_1 [mm]	CODE	L [mm]	b [mm]	pcs
4,8	FASN4825	25	17	200
TX 20	FASN4838	38	23	200

FAS G: RAL 7016 - anthracite gray



d_1 [mm]	CODE	L [mm]	b [mm]	pcs
4,8	FASG4825	25	17	200
TX 20	FASG4838	38	23	200

GEOMETRY



Nominal diameter	d_1	[mm]	5
Head diameter	d_k	[mm]	12,30
Head thickness	t_1	[mm]	2,70



COMPATIBILITY

FAS is compatible with the most common fibre cement and HPL façade panel systems.