

KKK AISI410

SELF-DRILLING SCREW TIMBER-TO-TIMBER | TIMBER-TO-ALUMINIUM

TIMBER-TO-ALUMINIUM

Self-perforating timber-to-metal tip with special bleeder geometry. Ideal for fastening timber or WPC boards to aluminium substructures.

TIMBER-TO-TIMBER

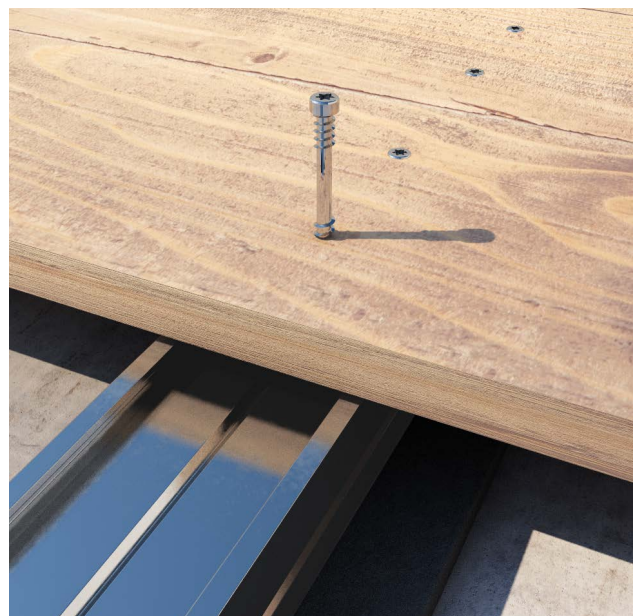
Also ideal for fastening timber or WPC boards to thin wooden substructures, they, too, made with wooden boards.

METAL-TO-ALUMINIUM

Short version ideal for fastening clips, plates and angle brackets to aluminium substructures. Can be used to fix aluminium-aluminium overlaps.

OUTDOOR APPLICATIONS ON ACID WOOD

AISI410 martensitic stainless steel. This stainless steel offers the highest mechanical performance compared to the other available stainless steels. Suitable for outdoor applications and on acid wood, but away from corrosive agents (chlorides, sulphides, etc.).



DIAMETER [mm]

3,5 8

LENGTH [mm]

20 320

SERVICE CLASS

☒ SC1 ☐ SC2 ☐ SC3

ATMOSPHERIC CORROSIVITY

☒ C1 ☐ C2

WOOD CORROSIVITY

☐ T1 ☐ T2 ☐ T3 ☐ T4

MATERIAL

410
AISI

AISI410 martensitic stainless steel



KKK Ø5



KKK Ø4



FIELDS OF USE

Outdoor use.

Wooden boards with density of $< 880 \text{ kg/m}^3$
on aluminium with a thickness of $< 3.2 \text{ mm}$
(without pre-drill).

CODES AND DIMENSIONS



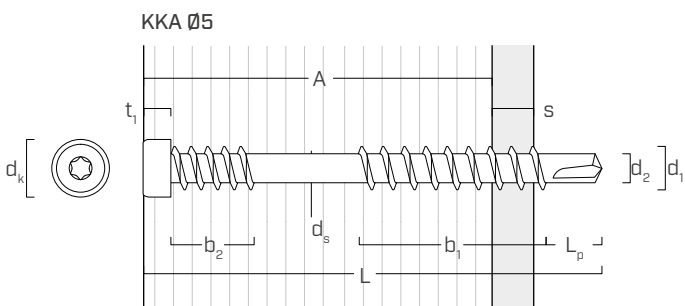
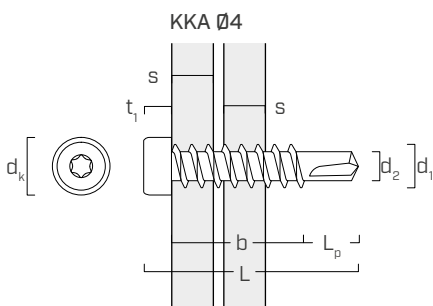
d_1 [mm]	CODE	L [mm]	b_1 [mm]	b_2 [mm]	A [mm]	s [mm]	pcs
4 TX 20	KKA420	20	11,4	-	-	1 ÷ 2,5	200



d_1 [mm]	CODE	L [mm]	b_1 [mm]	b_2 [mm]	A [mm]	s [mm]	pcs
5 TX 25	KKA540	40	15,5	11	29	2 ÷ 3	100
	KKA550	50	20,5	11	39	2 ÷ 3	100

s thickness that can be drilled, steel plate S235/St37
thickness that can be drilled, aluminium plate

GEOMETRY



Nominal diameter	d_1	[mm]	4	5
Head diameter	d_k	[mm]	6,30	6,80
Thread diameter	d_2	[mm]	2,80	3,50
Shank diameter	d_s	[mm]	-	4,35
Head thickness	t_1	[mm]	3,10	3,35
Tip length	L_p	[mm]	5,5	6,5



ALU TERRACE

Ideal for fastening timber or WPC boards, clips or angle brackets to aluminium substructures.